

LEDERACH TODAY AND TOMORROW



Use a post-it note to share changes you envision for the Village of Lederach and what you would like to stay the same...

One thing you would change...

One thing you would keep the same...

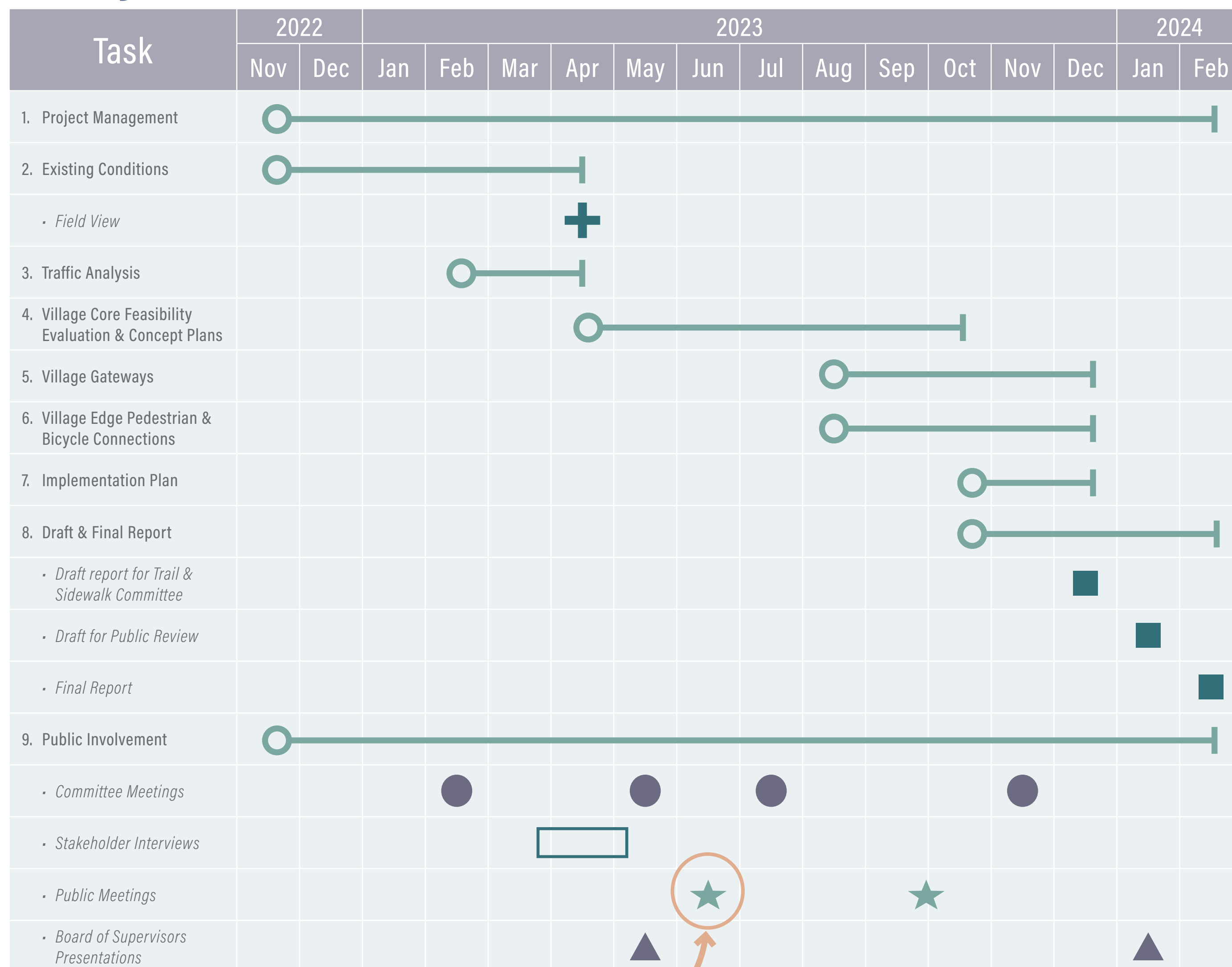
PROJECT OVERVIEW

Project Purpose

Develop and evaluate the feasibility of ways to:

- Make Lederach more walkable
- Provide regional bicycle and pedestrian connections
- Retain and promote the village character
- Plan for traffic and circulation

Project Schedule



We are here →

STUDY AREA



Funding Source

- Transportation and Community Development Initiative (TCDI) grant administered by DVRPC

Project Team

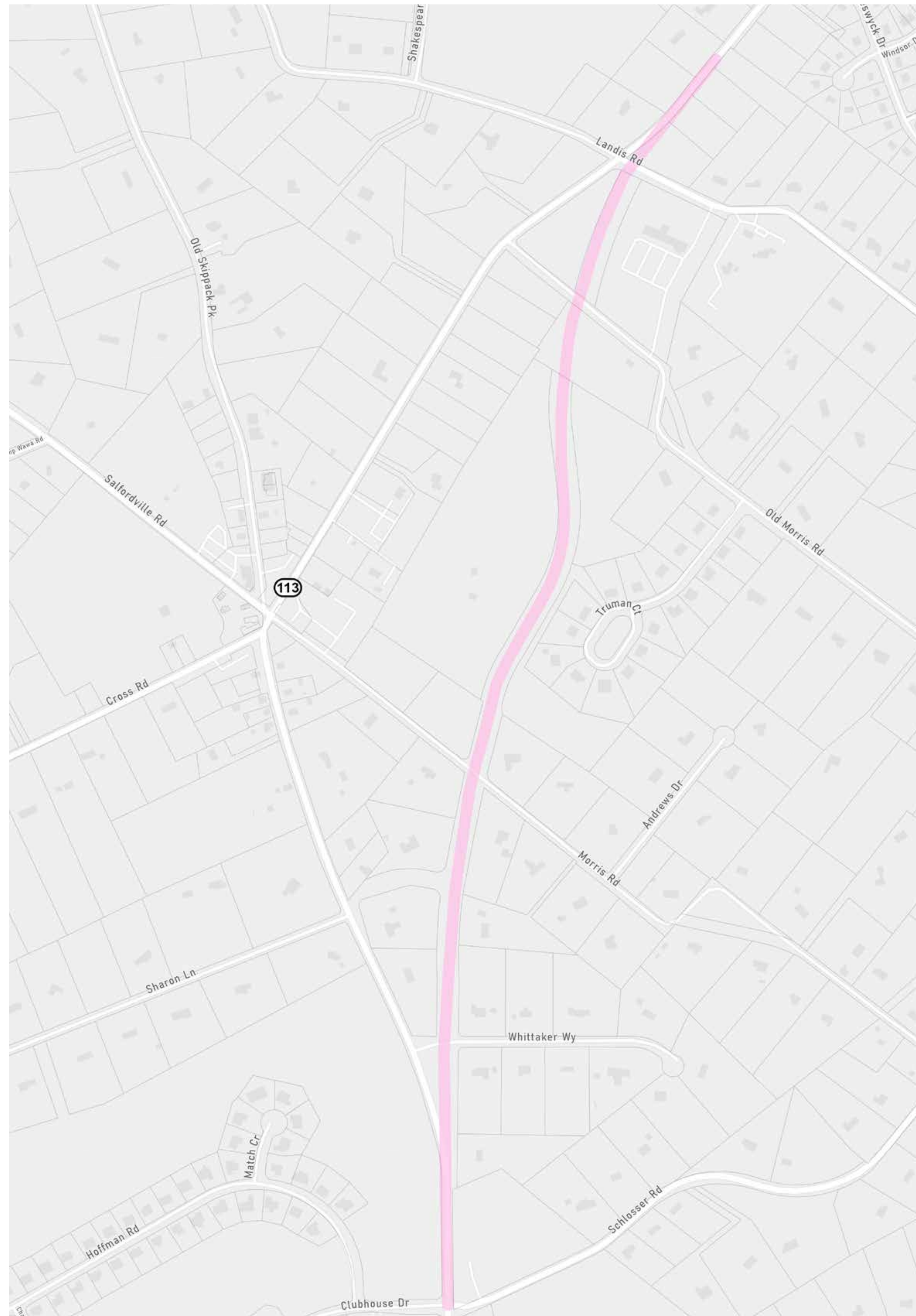
- Lower Salford Township – Project Sponsor
- McMahan, a Bowman company – Prime
 - » Emily Gates – Sustainable Design Graduate Student, Jefferson University
- NTM – Environmental

PLANNED PA 113 RELOCATION

Lower Salford Township has been planning for the potential relocation of PA 113 for decades, including:

- » Inclusion in local/regional plans and traffic analysis
- » Acquisition and dedication of significant right-of-way

Proposed PA 113 Realignment



How would relocating PA 113 affect your community?

A large, empty rectangular area enclosed by a dashed orange border, intended for community input or feedback.

HOW DID WE GET HERE?

 = OPPORTUNITIES FOR COMMUNITY INPUT



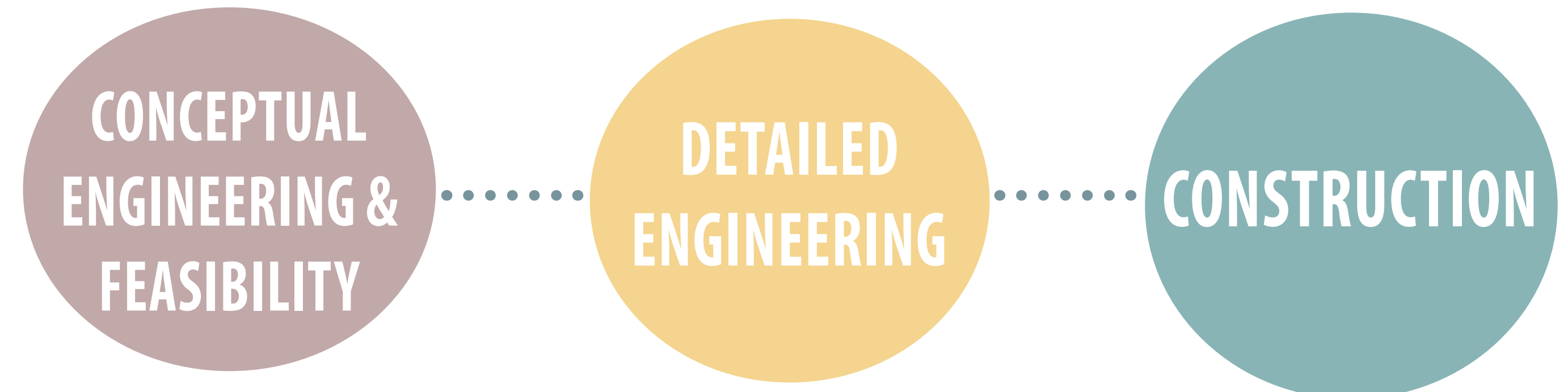
HOW DO WE IMPLEMENT THE PLAN?

DEPENDENT ON FUNDING

BASED ON COMMUNITY INPUT

CAPITAL IMPROVEMENTS

- Public Improvement Projects
- Land Development Projects



- Permitting
- Property Owner Coordination
- Utility Coordination

POLICIES & PROGRAMS

- Zoning Amendments
- Subdivision and Land Development Ordinance (SALDO) Amendments
- Community Initiatives

DRAFT VISION

The Village of Lederach is sustained as a bucolic and walkable village that reflects its historic character, fosters a sense of community, embraces small and local businesses, and provides safe connections for pedestrians, bicyclists, and motorists.

DRAFT GOALS

Enhance Connectivity...

...within the village so residents and visitors can safely walk and bike

...between the village and existing/ planned trails, bikeways, parks, and other recreational resources

Considerations:

- Sidewalks
- Internal walkways and paths
- Pedestrian crossing improvements: marked crosswalks, pedestrian signals
- On-road bicycle facilities
- Traffic calming measures

Manage traffic congestion, cut through traffic, and high traffic speeds through the village

Considerations:

- New roadway connections
- Traffic calming measures

Retain and celebrate the character and history of the village

Considerations:

- Gateway treatments
- Streetscape design features
- Interpretative and/or wayfinding signs

Support a mix of uses within the village, including small and local businesses

Considerations:

- Gathering spaces
- Shared parking

Share your vision and goals!

Use a post-it note to add things that are important to you.

WHAT CAN WE DO ALONG ROADWAYS?

SIDEWALKS



Description:

Pathways parallel to the road that are intended for use by pedestrians, often with numerous access points to adjacent land uses. Typically physically separated from the roadway with a curb and/or verge that may contain grass, vegetation, pavers, and sometimes street trees. Sidewalks are typically concrete, but can be constructed with asphalt, bricks, or pavers.

Place a dot below to indicate how well each feature would fit in Lederach



WALKWAYS



Description:

Internal pedestrian paths that can be located within public spaces or through commercial areas. Walkways can be made from a variety of materials to fit local context and provide complete separation from the roadway. Walkways can be combined with pedestrian scale lighting and landscaping to enhance user experience.



PEDESTRIAN SCALE LIGHTING

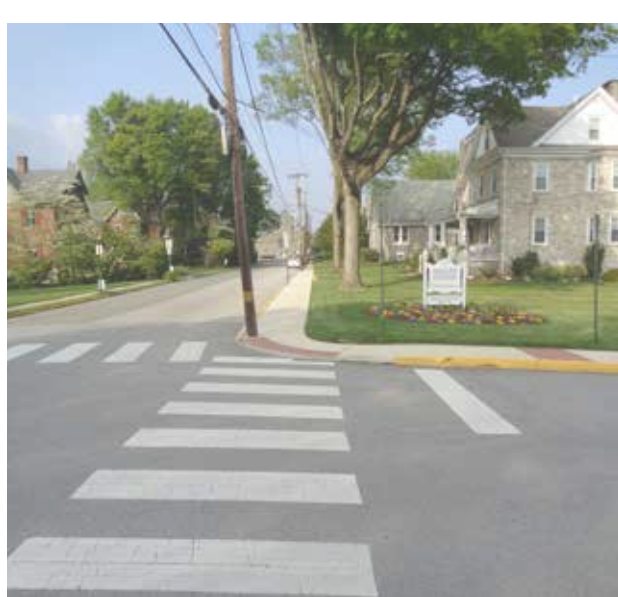


Description:

Pedestrian-scale street lights, 10 to 12 feet in height, help provide security along sidewalks, as well as help to provide aesthetic appeal to the streetscape.



MARKED CROSSWALKS



Description:

Marked crosswalks are pavement markings designating a location for pedestrians to cross a road, often connecting sidewalks, paths, or multi-use trails. High visibility crosswalks are most visible to motorists, but other materials such as brick pavers can be used to fit local context. Crosswalks can also be raised to act as a traffic calming measure.



WHAT CAN WE DO WITHIN ROADWAYS?

SHARED LANES



Place a dot below to indicate how well each feature would fit in Lederach

NOT RIGHT FOR LEDERACH

LOVE IT FOR LEDERACH

Description:

Shared lanes are a roadway treatment with signage and pavement markings to indicate the use of a travel lane by both bicycles and motor vehicles along roadways with lower speed and lower traffic volumes.

BIKE LANES



NOT RIGHT FOR LEDERACH

LOVE IT FOR LEDERACH

Description:

Bike lanes are a portion of the roadway that has been designated by striping, signage, and pavement markings for preferential or exclusive use by bicyclists.

ON STREET PARKING



NOT RIGHT FOR LEDERACH

LOVE IT FOR LEDERACH

Description:

Designated parking along a roadway can provide needed parking to residents and businesses while also helping to slow traffic.

GATEWAY TREATMENTS



NOT RIGHT FOR LEDERACH

LOVE IT FOR LEDERACH

Description:

Gateway treatments help provide identity and a sense of arrival as people enter the village. They also help with traffic calming by encouraging slower vehicle speeds.

WHAT CAN WE DO TO ENHANCE USER EXPERIENCE?

LANDSCAPED SPACES



Place a dot below to indicate how well each feature would fit in Lederach



Description:

Landscaping can help soften hardscaped areas and increase aesthetic appeal. It can also serve a functional purpose by helping manage stormwater or providing habitat for native species.

STREET TREES



Description:

Street trees can help improve visual aesthetics and can enhance user experience by providing shade and comfort along roadways.

SEATING AREAS



Description:

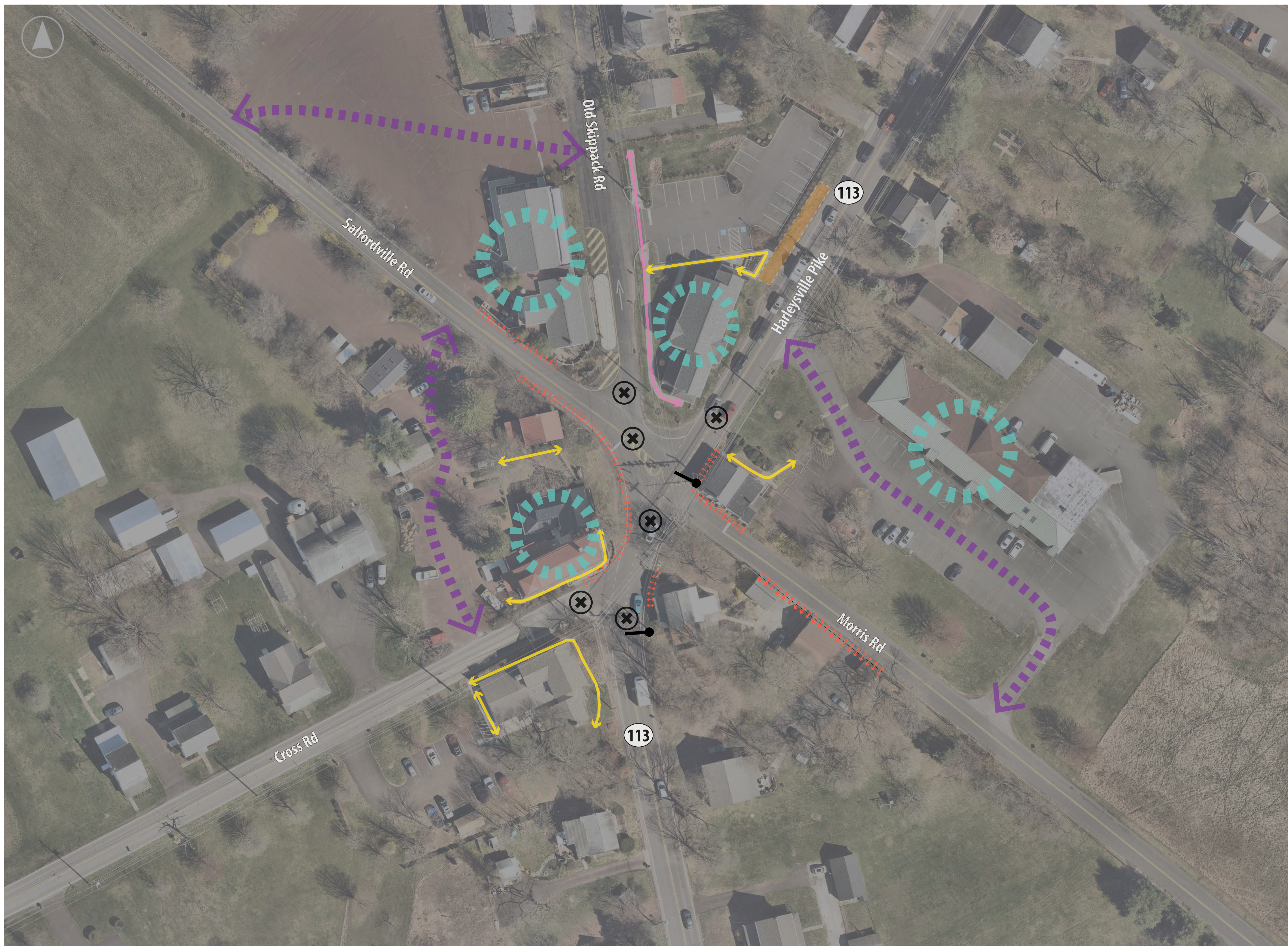
Seating areas can be provided along sidewalks, paths, park areas, or at scenic vistas. Seating can include benches, outdoor dining, or seat walls.

INTERPRETIVE/WAYFINDING SIGNAGE



Description:

A range of directional signs, pavement markings, or interpretative signs that are used to identify a facility and provide basic information, such as directional arrows, mileage, map, or narrative.



Cut Through Traffic



Walkways
Mix of Public/Private



Sidewalks



Tight Spaces



Destinations



Unmarked/
Prohibited
Pedestrian Crossing

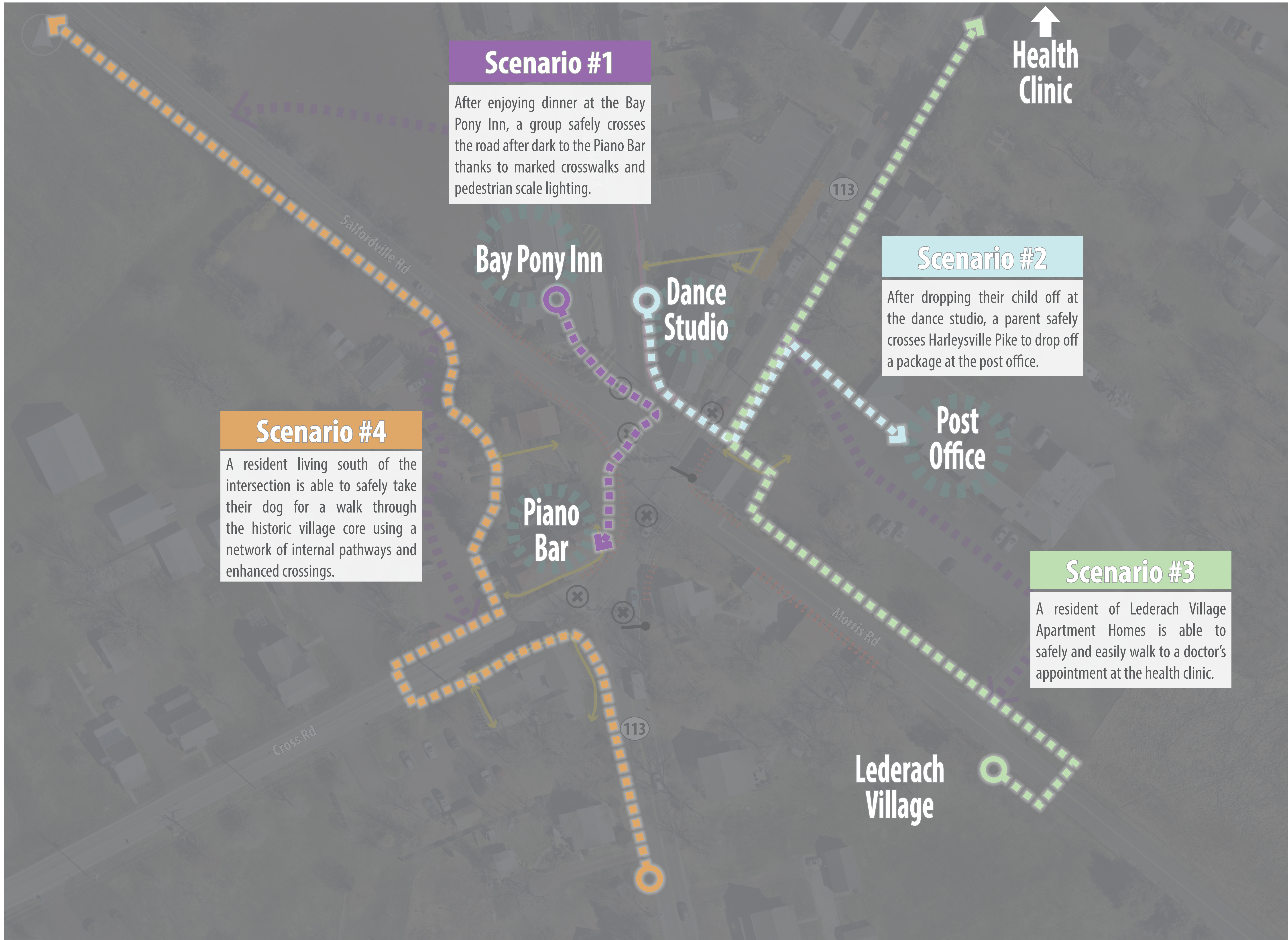


Informal Drop-Off/
Pick-Up Zone



Traffic Signal and
Mast Arm





Scenario #1

After enjoying dinner at the Bay Pony Inn, a group safely crosses the road after dark to the Piano Bar thanks to marked crosswalks and pedestrian scale lighting.

Bay Pony Inn

Dance Studio

↑
Health Clinic

Scenario #2

After dropping their child off at the dance studio, a parent safely crosses Harleysville Pike to drop off a package at the post office.

Post Office

Scenario #4

A resident living south of the intersection is able to safely take their dog for a walk through the historic village core using a network of internal pathways and enhanced crossings.

Piano Bar

Scenario #3

A resident of Lederach Village Apartment Homes is able to safely and easily walk to a doctor's appointment at the health clinic.

Lederach Village



Walkways

Mix of Public/Private

Existing

Potential

Sidewalks/ Pedestrian Paths

Existing

Potential

Developer

Tight Spaces

Red dashed line symbol

Destinations

Teal dashed circle symbol

Outdoor Community Spaces

Green dashed rectangle symbol

Marked Crosswalks

White dashed rectangle symbol

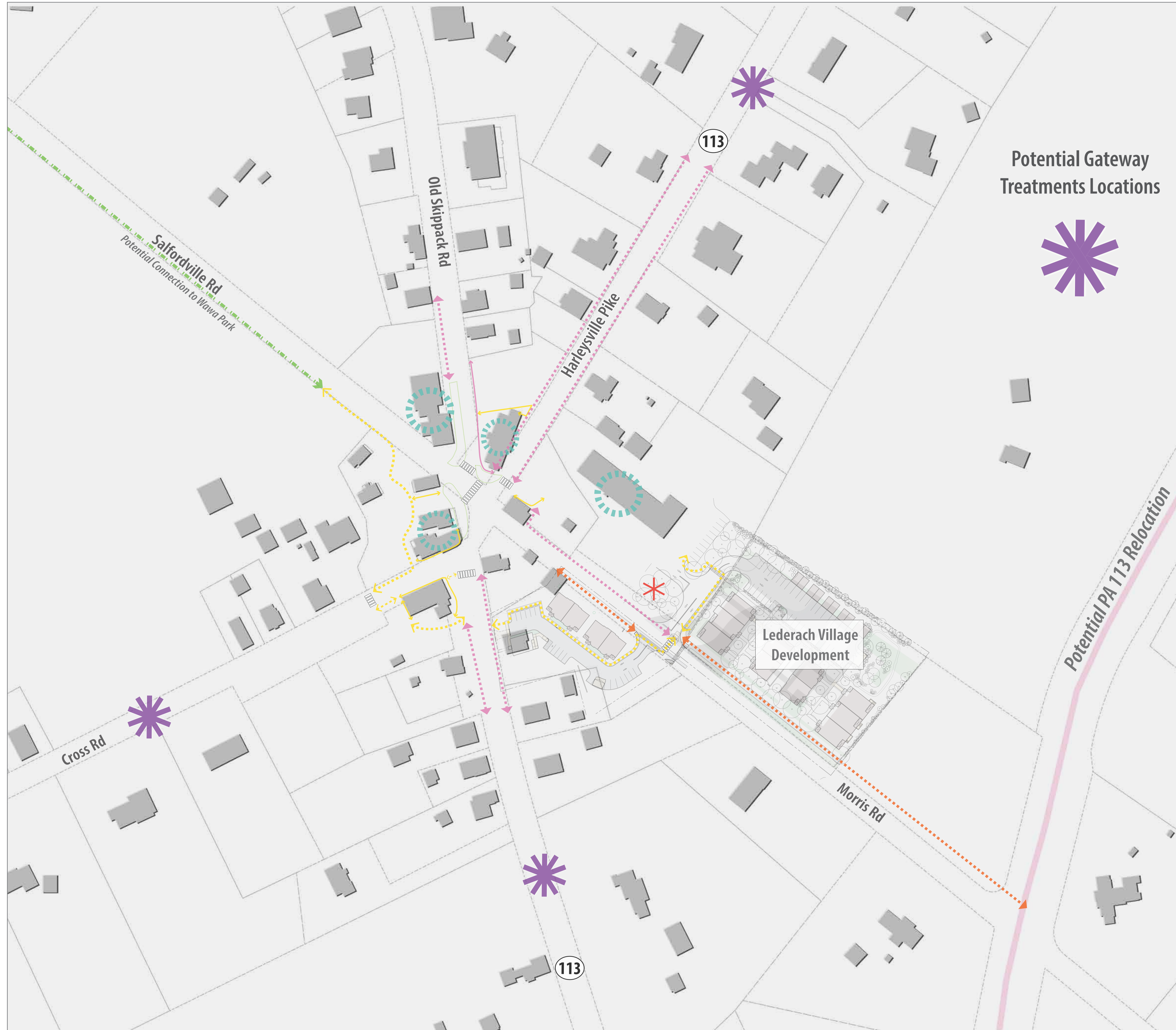
VILLAGE GATEWAYS - POTENTIAL CONNECTIONS

DRAFT - 6/15/23

Gateway examples from other locations



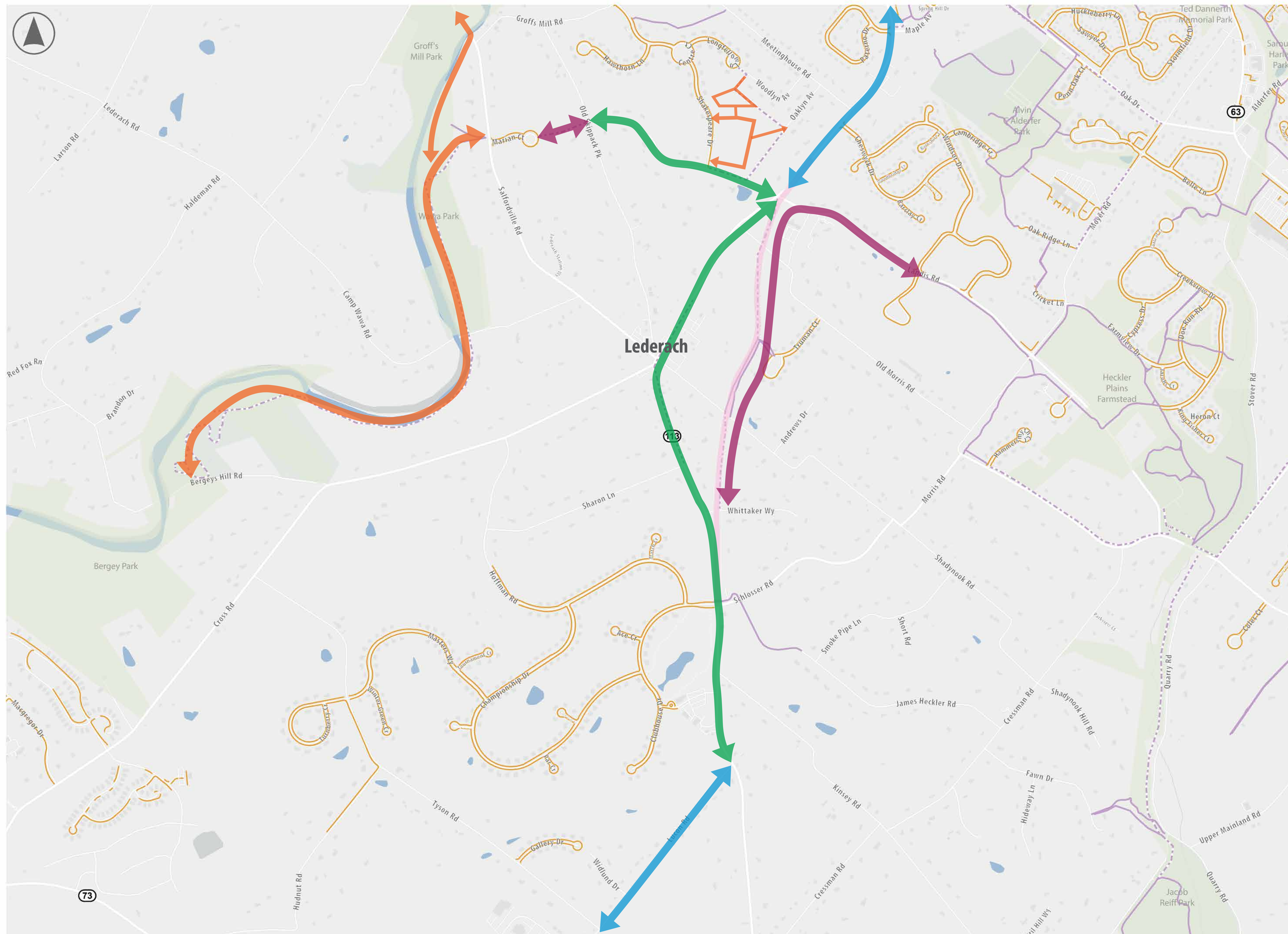
Gateway examples from other locations



Potential Gateway Treatments Locations

VILLAGE EDGE - POTENTIAL CONNECTIONS

DRAFT - 6/15/23



- Potential Treatments**
- Shared Use Path
 - Foot Path
 - Bike Lanes
 - Shared Lanes
 - Existing Sidewalks
 - Existing Path
 - Future Path
 - PA 113 Relocation
 - Parks/Open Space

How Might We Reimagine Outdoor Spaces Within the Village of Lederach to Enhance Identity and Connectivity?..

PERFORMANCE



Green Street Example at Broad St & New Dauphin St, City of Lancaster, PA
(Photo Credit: Karl Graybill, City of Lancaster)

How might we measure and describe aspects of new ideas into readily measurable, observable traits?

Keywords:

- Energy
- Efficiency
- Resources
- Circulation
- Safety
- Measurable climate change

SYSTEMS



Penn State Arboretum's Pollinator and Bird Garden, State College, PA (Photo Credit: pennlive.com)

How might we create positive interactions among both natural and human-made systems?

Keywords:

- Waterways
- Stormwater management
- Energy
- Habitat
- Biodiversity
- Ecosystems
- Transportation
- Infrastructure

CULTURE



Wayfinding signage program with a strong focus on destinations to historical landmarks while promoting walkability in the Bethlehem, PA (Photo Credit: tangramdesignllc.com)

How might we foster shared values, beliefs, religious rituals, local history, heritage, traditions and norms to strengthen community ties?

Keywords:

- Education
- Welcoming
- Diversity, equity and inclusion
- Historical context
- Community
- Technology
- Local happenings

EXPERIENCE

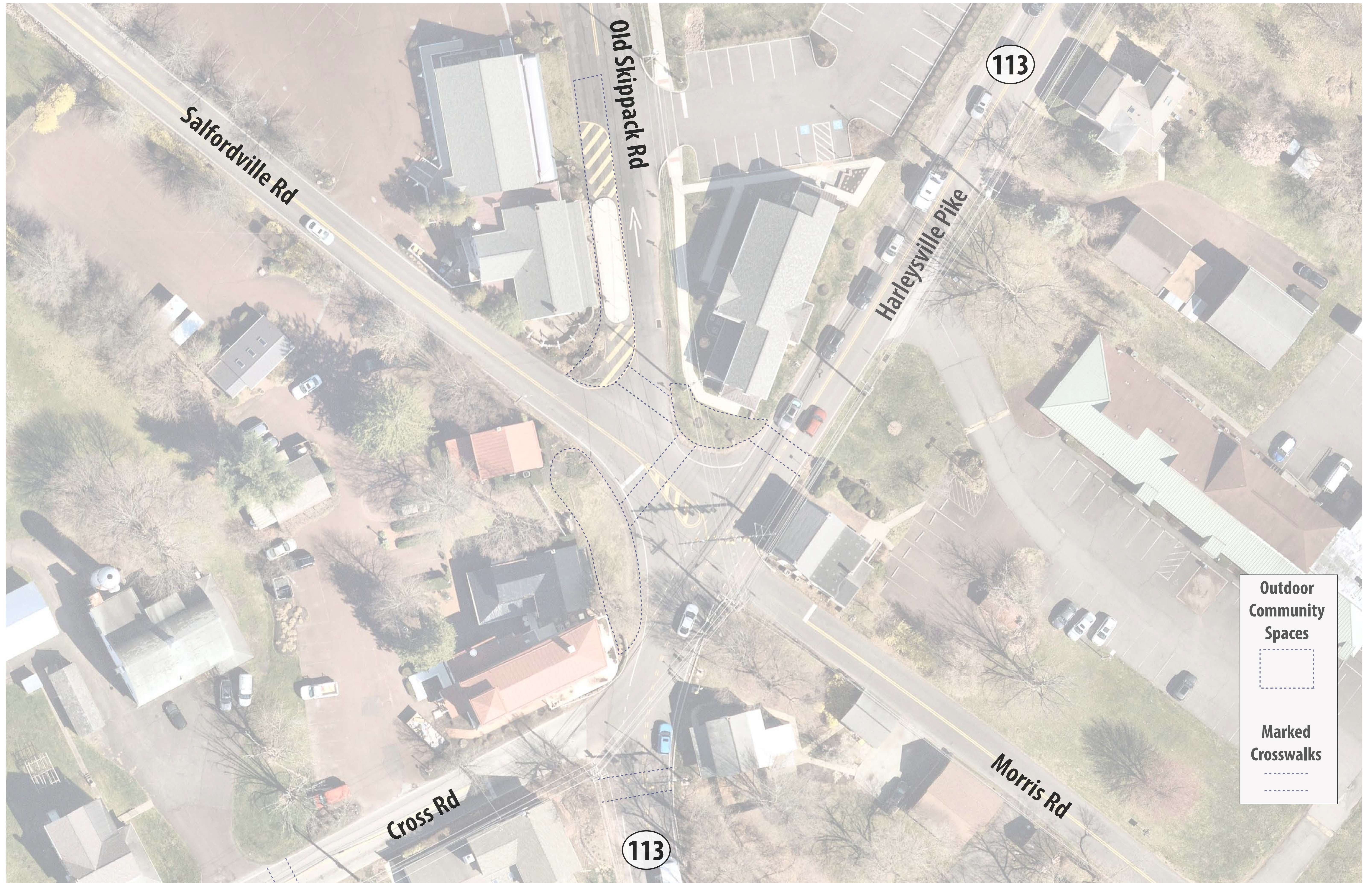


Outdoor seating and landscaping at Plum and Walnut Intersection, City of Lancaster.
PA Photo Credit: Karl Graybill, City of Lancaster

How might we enhance spaces to be more inviting, aesthetically pleasing and enjoyable to all?

Keywords:

- Sense of beauty
- Sensory
- Views
- Materials
- Playful
- Comfort
- Encounters
- Happiness
- Natural elements



IF PA 113 RELOCATION IS BUILT...

What is the future of Harleysville Pike?

Existing Conditions



Converting to one-way could open up space for...

SIDEWALKS



BIKE LANES



ON-STREET PARKING



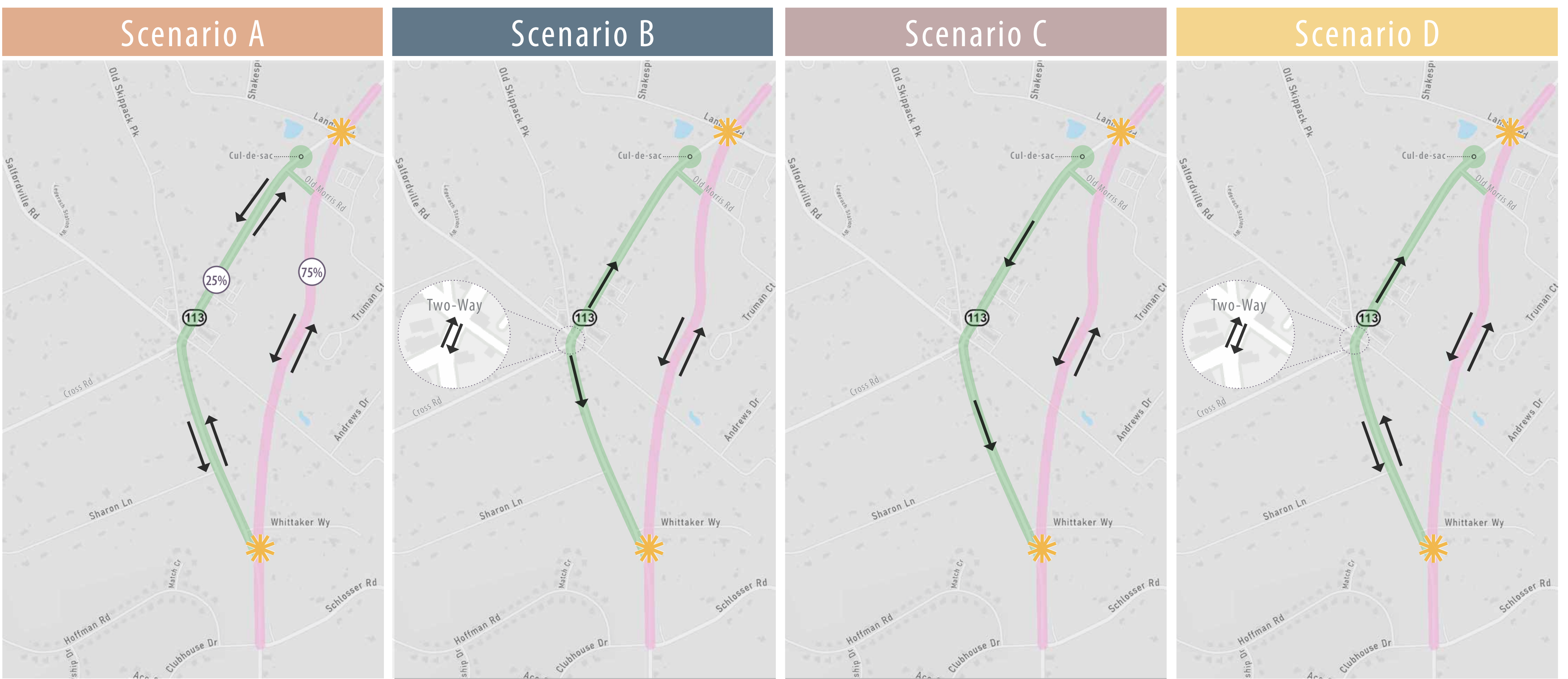
GATEWAYS



OTHER IDEAS?



Some potential traffic scenarios...



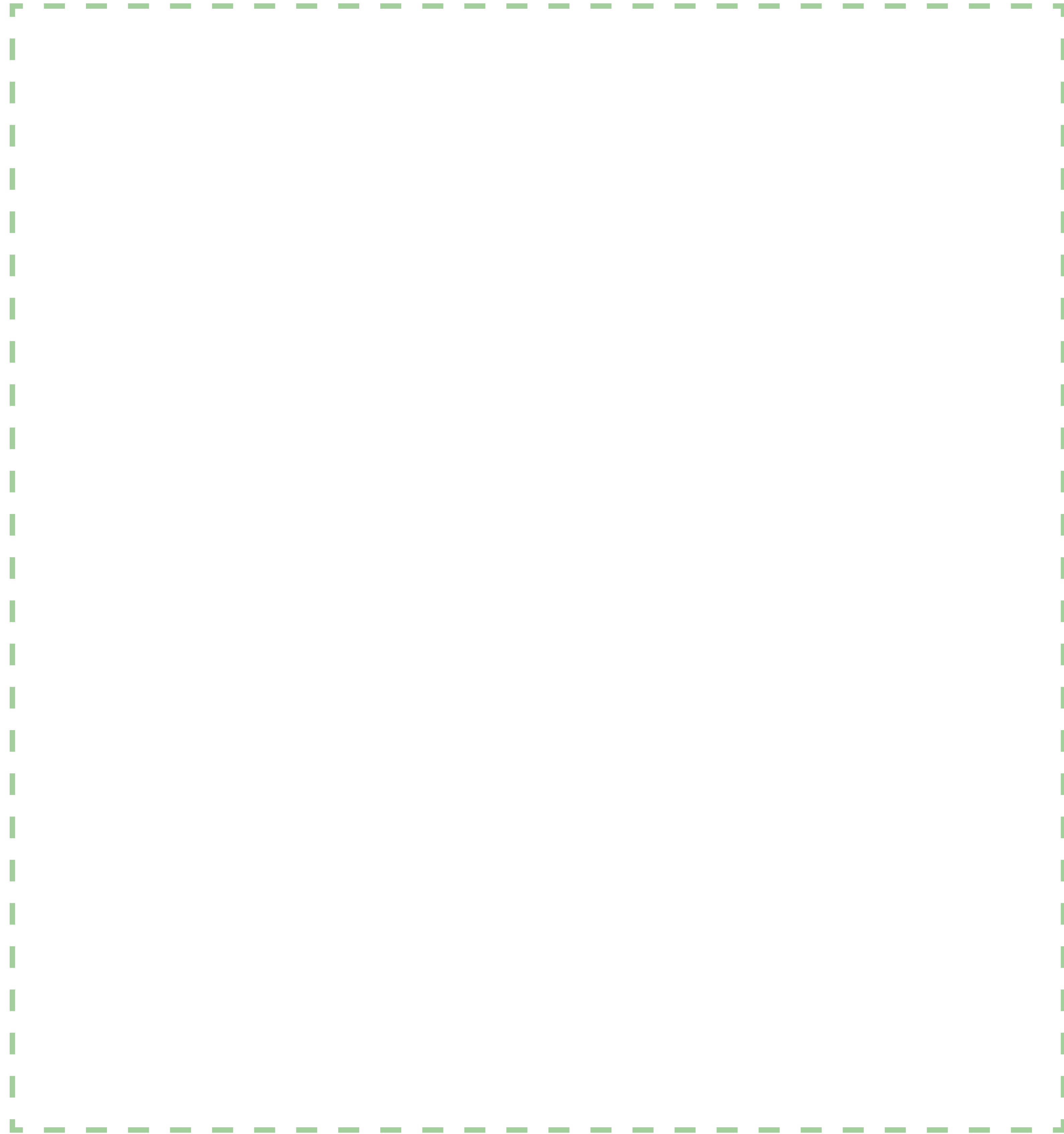
█ Harleysville Pike (Current PA 113) Potential Modified Operations
 █ PA 113 Relocated Proposed Alignment
 Tie-in configurations between Harleysville Pike and relocated PA 113 require further evaluation in a separate project

A ONE-WAY SCENARIO WOULD...

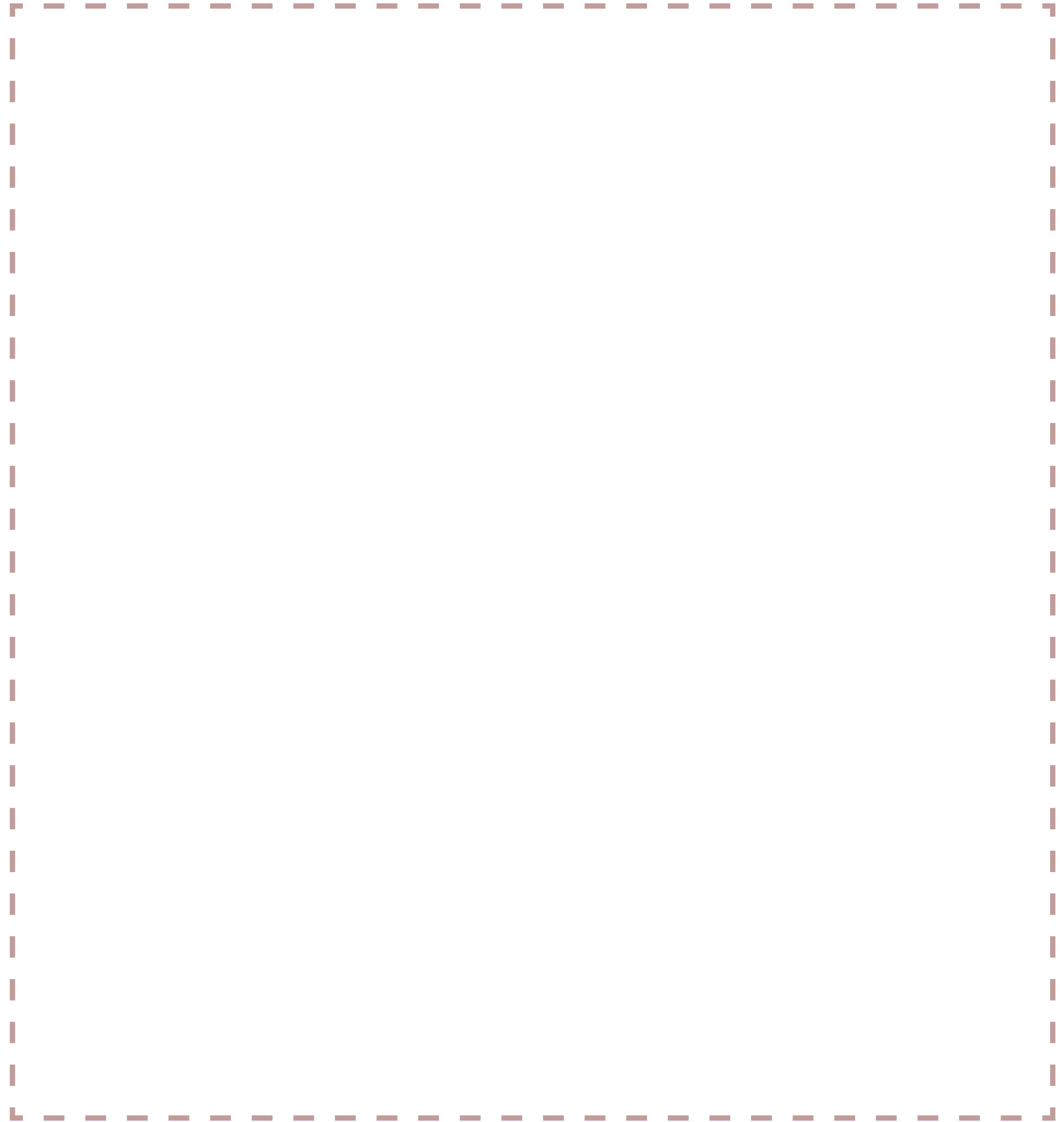
Any one-way scenario could present advantages and disadvantages.

Use a post-it note to share how changing Harleyville Pike to one-way would affect you and your community.

Advantages



Disadvantages



SHOULD ONE-WAY SCENARIOS BE CONSIDERED?

Any potential one-way scenarios will require additional evaluation. Do you think one-way scenarios for Harleystville Pike should be considered further?

Place a dot to indicate your answer



YES

NO